

CWX Compact Cutoff Wall Pack

INSTALLATION/INSTALACIÓN

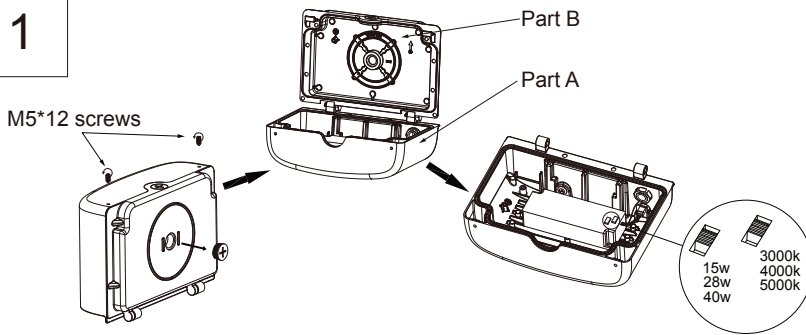
Disconnect the power before installation. Exploded view of completed assembly with component call out. 1, 2, 3, etc.

Desconecte la alimentación antes de la instalación. Vista de despiece del conjunto completo con indicación de componentes. 1, 2, 3, etc

Débranchez l'alimentation avant l'installation. Vue en éclaté de l'assemblage complet, avec le nom des composants. 1, 2, 3, etc.

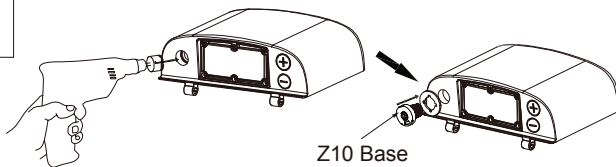
Sensor Installation - Z10

1



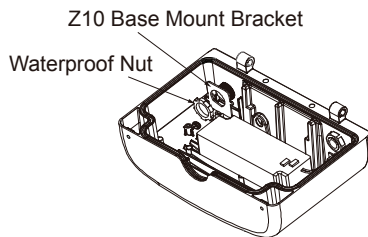
Unscrew the two M5*12 screws, remove the knockout cover. Place Part A perpendicular to Part B and remove Part A in the direction of the arrow. Separate A from B. Adjust wattage and CCT according to your requirement (The default setting: CCT - 5000K; Wattage - 40W).

2



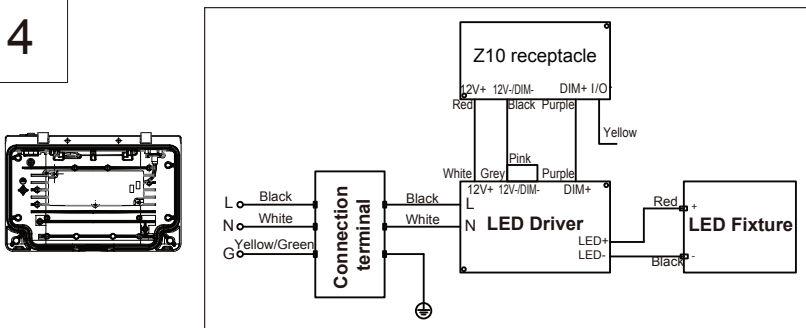
Drill the $\Phi 21$ mm hole. Insert Z10 base to the left hole.

3



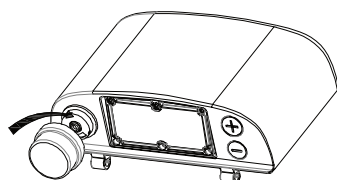
Tighten Z10 base with mount bracket and waterproof nut.

4



Connect wires according to the left wiring diagram.

5

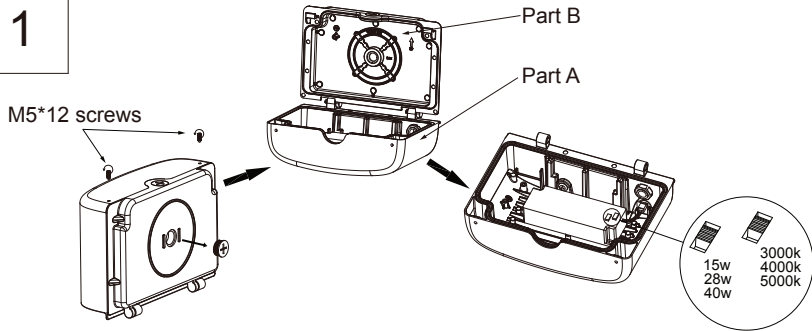


Align the hole and lock Z10 sensor.

CWX Compact Cutoff Wall Pack

Sensor Installation - ANT11

1



M5*12 screws

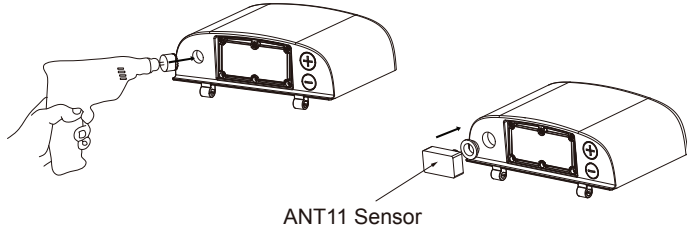
Part B

Part A

15w 28w 40w 3000k 4000k 5000k

Unscrew the two M5*12 screws, remove the knockout cover. Place Part A perpendicular to Part B and remove Part A in the direction of the arrow. Separate A from B. Adjust wattage and CCT according to your requirement (The default setting: CCT - 5000K; Wattage - 40W).

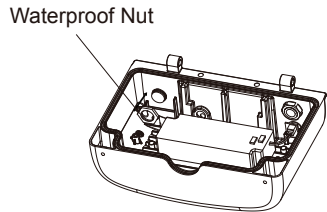
2



ANT11 Sensor

Drill the $\Phi 18\text{mm}$ hole. Insert ANT11 sensor to the left hole.

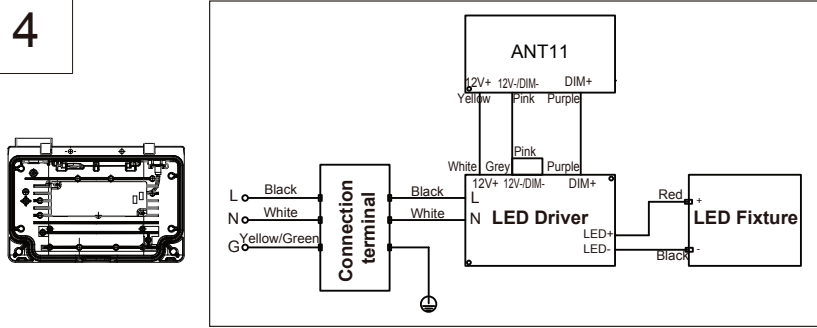
3



Waterproof Nut

Tighten ANT11 sensor with waterproof nut.

4



ANT11

12V+ 12V-DIM- DIM+

Yellow Pink Purple

White Grey Pink Purple

Black White

12V+ 12V-DIM- DIM+

L N LED Driver

LED+ LED-

Red Black

LED Fixture

L Black

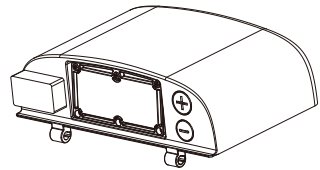
N White

G Yellow/Green

Connection terminal

Connect wires according to the left wiring diagram.

5

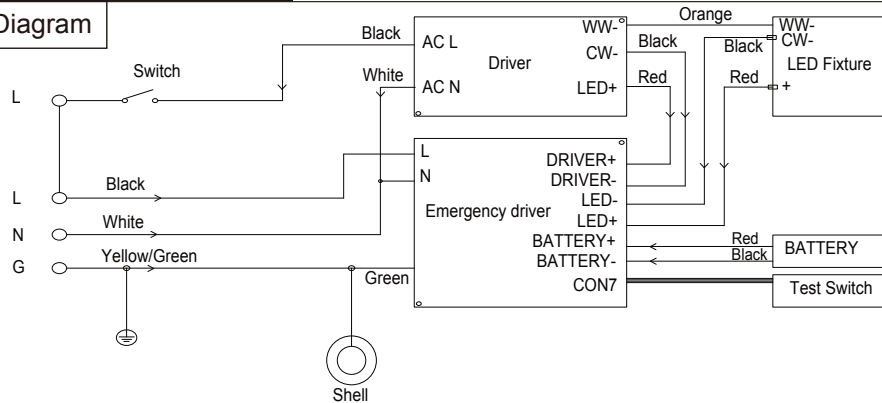


Finish.

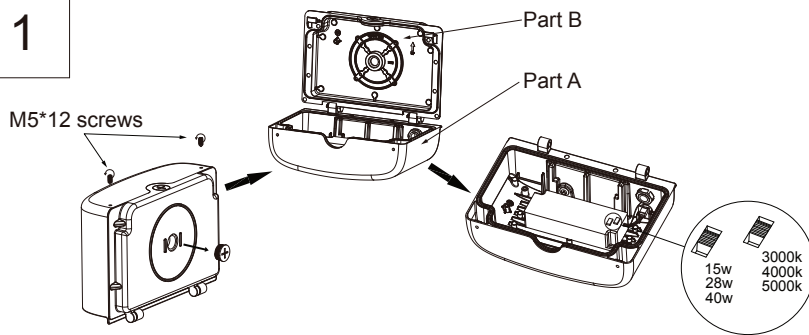
CWX Compact Cutoff Wall Pack

Emergency Driver Installation

Emergency Driver Wiring Diagram

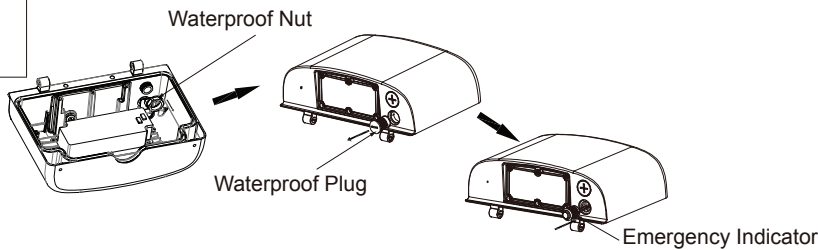


1



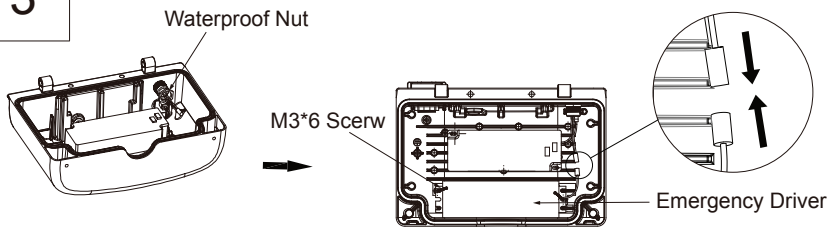
Unscrew the two M5*12 screws, remove the knockout cover. Place Part A perpendicular to Part B and remove Part A in the direction of the arrow. Separate A from B. Adjust wattage and CCT according to your requirement (The default setting: CCT - 5000K; Wattage - 40W).

2



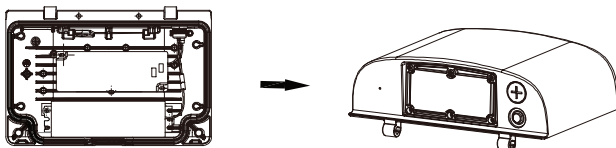
Unscrew the waterproof nut, remove the waterproof plug, and fix emergency indicator to the right hole.

3



Tighten emergency indicator with nut. Fix the emergency driver with two M3*6 screws. Connect the emergency driver and emergency indicator quick connector.

4



Connect wires according to the wiring diagram.